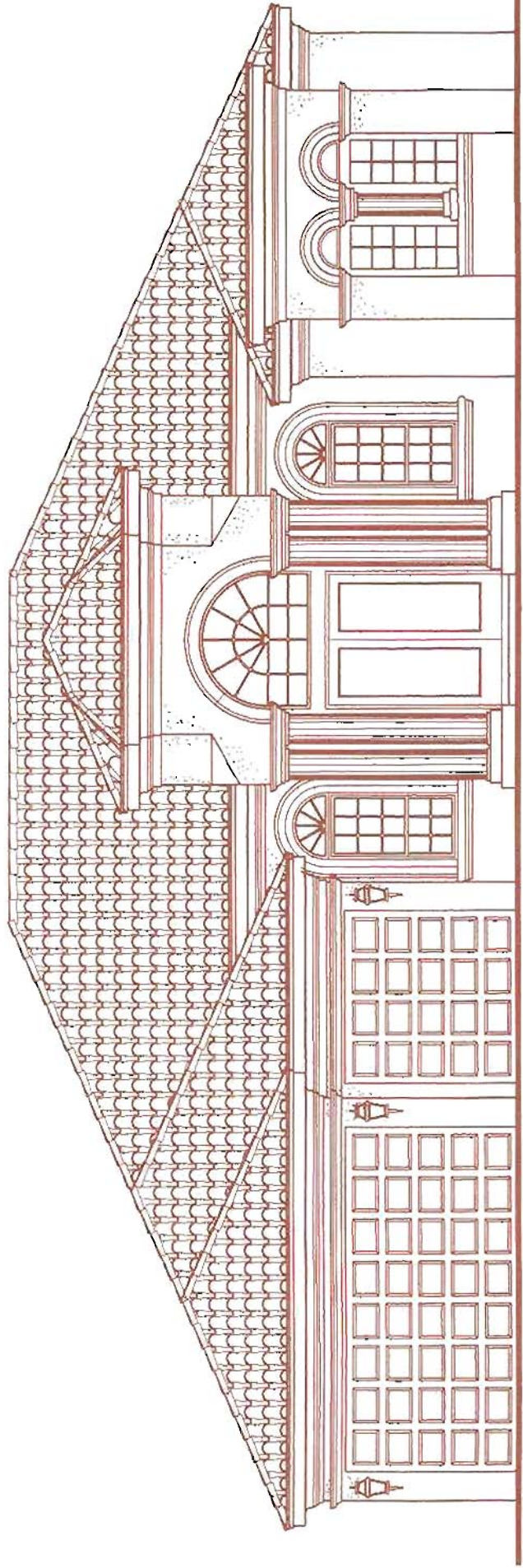




THE MAJESTIC

4 BEDROOMS, 4 BATHROOMS, FAMILY ROOM
BILLIARDS ROOM, DEN, 3-CAR GARAGE

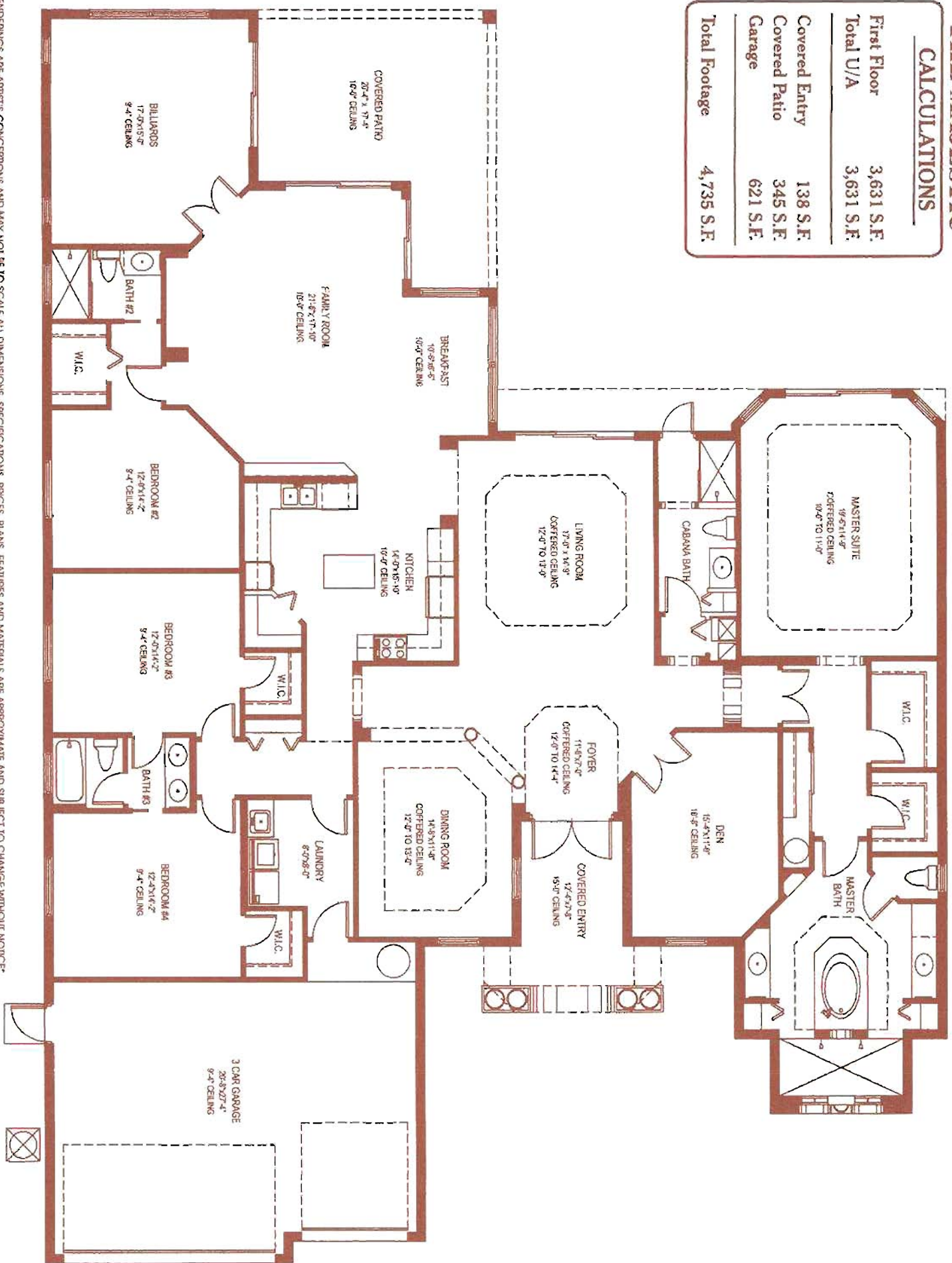


FRONT ELEVATION

THE MAJESTIC

CALCULATIONS

First Floor	3,631 S.F.
Total U/A	3,631 S.F.
Covered Entry	138 S.F.
Covered Patio	345 S.F.
Garage	621 S.F.
Total Footage	4,735 S.F.



RENDERINGS ARE ARTIST'S CONCEPTIONS AND MAY NOT BE TO SCALE. ALL DIMENSIONS, SPECIFICATIONS, PRICES, PLANS, FEATURES AND MATERIALS ARE APPROXIMATE AND SUBJECT TO CHANGE WITHOUT NOTICE.