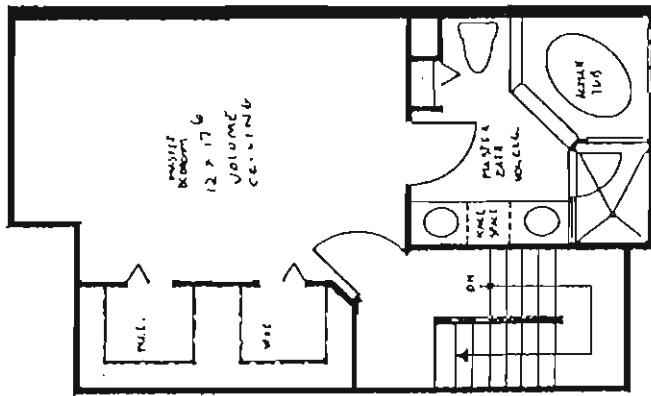


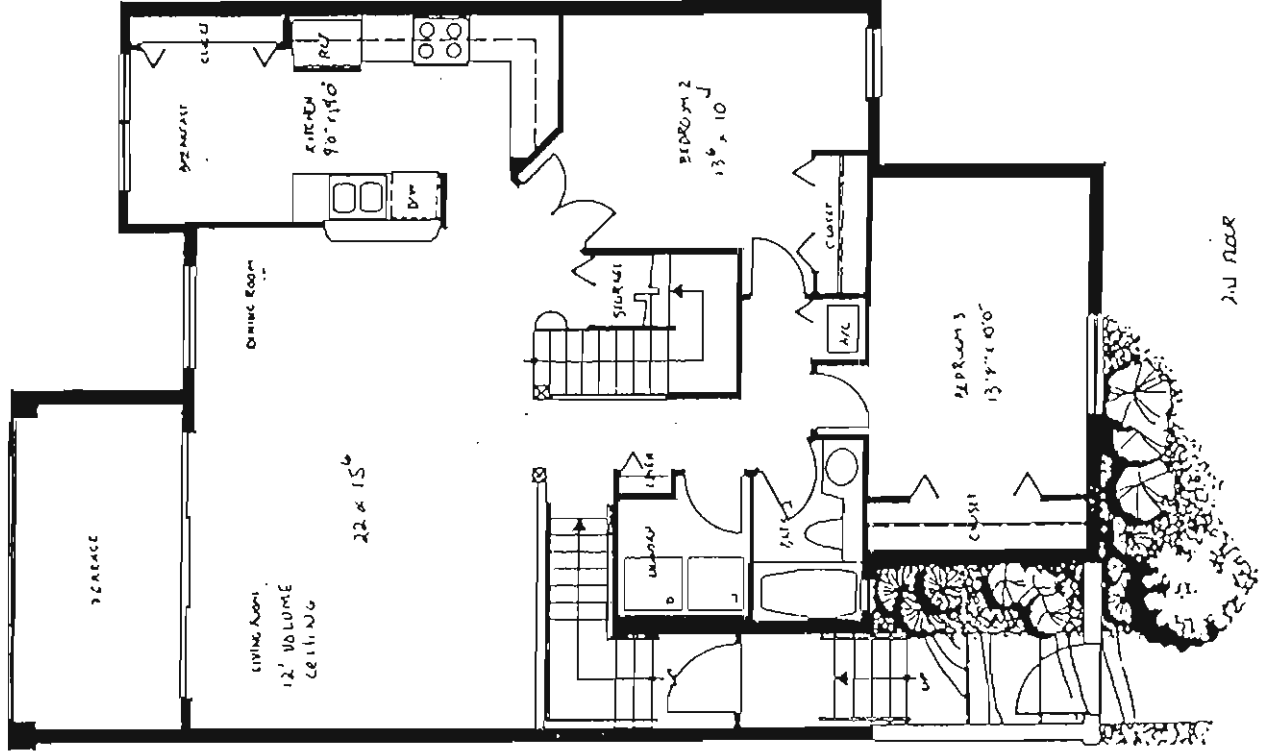
EAGLE TRACE, A Golf/Lake Townhome
 Three Bedrooms, Two Baths

Living Area 1605 square feet
 Covered Balcony 128 square feet
 Entry 97 square feet

Total Square Footage 1830



3rd Floor



2nd Floor

Las Verdes

BY GEMSTAR HOMES, INC.

GRAND PALMS

GOLF AND COUNTRY CLUB

101 Grand Palms Drive, Pembroke Pines, FL 33027

(just west of I-75 on Hollywood/Pines Blvd.)

Phone (305) 437-1400 in Broward, (305) 949-0600 in Dade

All dimensions and specifications are approximate and are subject to change without notice