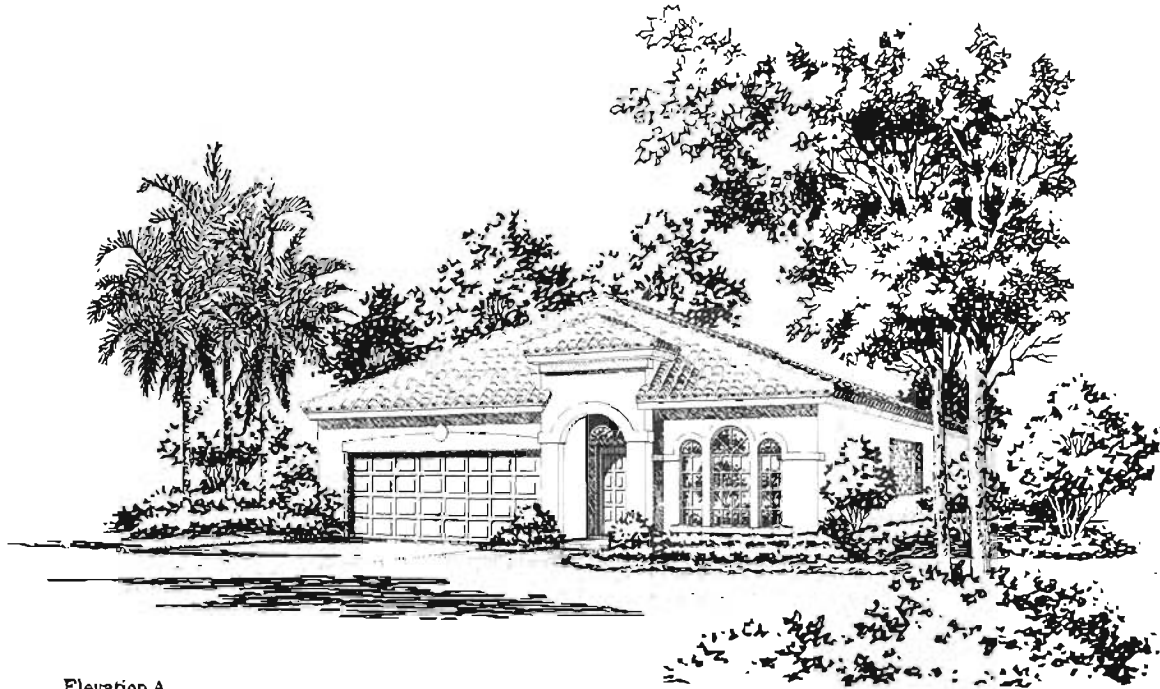


# The St. Tropez

2,001 A/C Square Feet  
3 Bedrooms, 2 Bathrooms, Family Room  
2 Car Garage



Elevation A



Elevation B



AT PEMBROKE SHORES

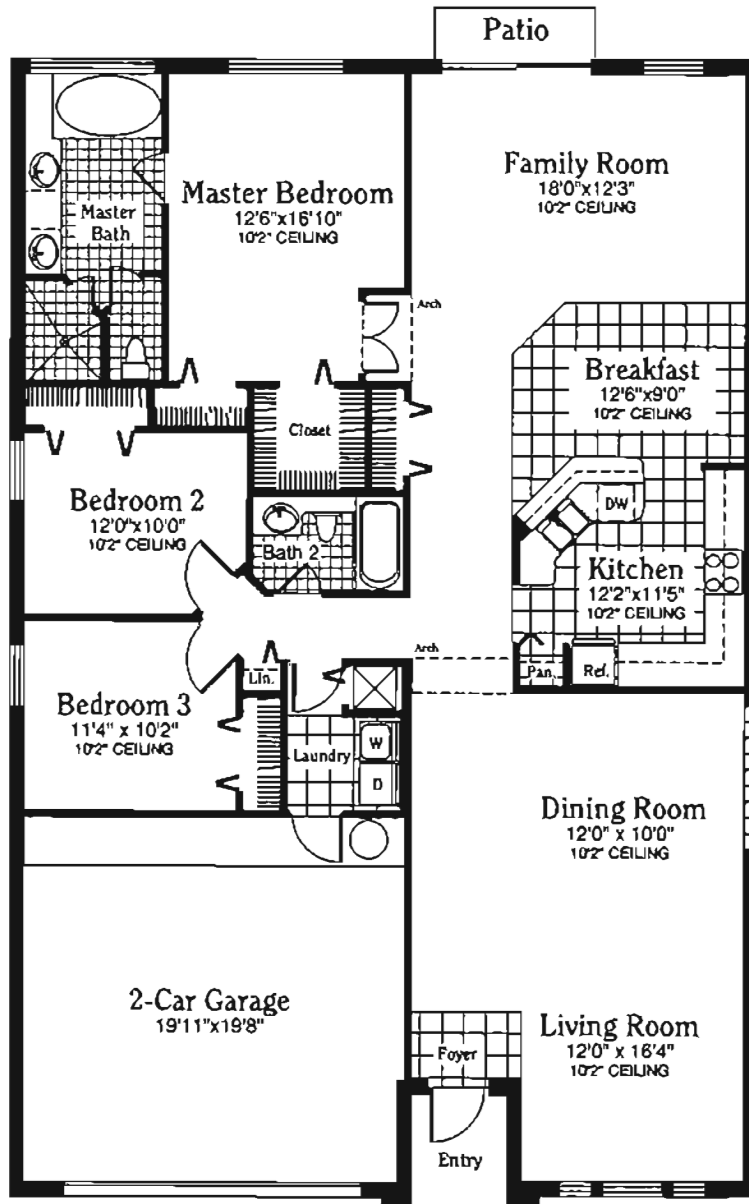
*Artist's Conception*

16401 S.W. 1st Street • Pembroke Pines, Florida 33027 • (305) 430-8600 • Fax (305) 430-4447

# The St. Tropez

2,001 A/C Square Feet

3 Bedrooms, 2 Bathrooms, Family Room  
2 Car Garage



|                 |                    |
|-----------------|--------------------|
| A/C Living Area | 2,001 Sq Ft        |
| Covered Entry   | 32 Sq Ft           |
| Garage          | 420 Sq Ft          |
| <b>TOTAL</b>    | <b>2,453 Sq Ft</b> |

Copyright © 1994, The New K. Hovnanian Companies of Florida



*Distinctive By Design*

Developer reserves the right to change and/or alter materials, specifications, features, dimensions, designs and prices without prior notice. All plans and elevations are artist's renderings and may vary somewhat in precise detail and dimensions. All measurements are approximate.