

# Harbour House

2,278 A/C Square Feet  
4 Bedrooms, 3 Bathrooms, Family Room  
Covered Patio, 2-Car Garage



Elevation A



Elevation B



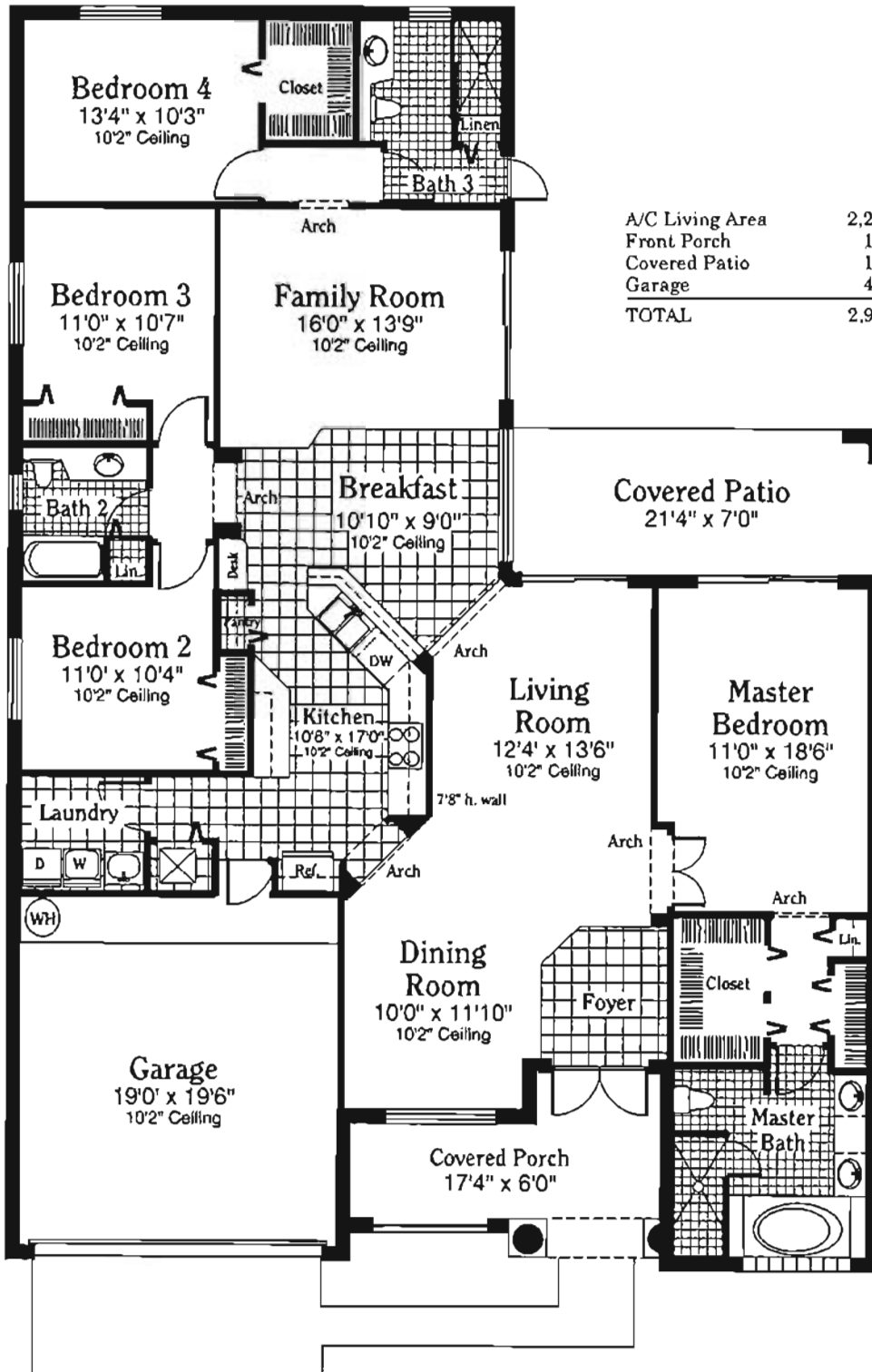
AT PEMBROKE SHORES

*Artist's Conception*

16401 S.W. 1st Street • Pembroke Pines, Florida 33027 • (305) 430-8600 • Fax (305) 430-4447

# Harbour House

2,278 A/C Square Feet  
 4 Bedrooms, 3 Bathrooms, Family Room  
 Covered Patio, 2-Car Garage



A/C Living Area	2,278 Sq Ft
Front Porch	136 Sq Ft
Covered Patio	149 Sq Ft
Garage	409 Sq Ft
<b>TOTAL</b>	<b>2,972 Sq Ft</b>

Copyright © 1994, The New K. Hovnanian Companies of Florida



*Distinctive By Design*

Developer reserves the right to change and/or alter materials, specifications, features, dimensions, designs and prices without prior notice. All plans and elevations are artist's renderings and may vary somewhat in precise detail and dimensions. All measurements are approximate.