

WATERSIDE FEATURES

Community Features

- Homesites 75' x 130' (average)
- Fabulous lake views
- Lush tropical landscaping
- Street lighting
- Sidewalks throughout community
- Underground utilities
- Municipal water and sewer services
- Six tennis courts
- Basketball
- Tot-lot
- Spring Valley community pool
- Architecturally integrated entry feature with landscaping and sprinkler system

Exterior Features

- Mediterranean architectural design
- Solidly-built concrete block construction, including second floor where practical
- Durable Mediterranean-style, rolled roof tiles
- Covered entries with integral roof structure
- Hurricane shutters
- Decorative handle hardware with deadbolt on Colonial-style, insulated entry doors
- Front and rear electrical outlets
- Beautifully landscaped and sodded homesites
- Sprinkler system with automatic timer

Interior Features

- Individually monitored security alarm systems (3 year monitoring agreement required)
- 13" x 13" ceramic tile flooring in choice of designer colors in foyers, kitchens, morning/breakfast rooms and laundry rooms
- Marble window sills
- Lush wall-to-wall wall carpeting in choice of decorator colors
- Colonial interior doors

- Dramatic, high flat or volume ceilings in all living areas
- Decorative lever door handles
- Colonial bi-fold closet doors
- Colonial wood-base moldings
- Electric door chimes
- Telephone jacks in all bedrooms and kitchens
- Cable television outlets in all bedrooms and family rooms
- Pre-wired ceiling fan outlets in master bedrooms and family rooms
- Sprayed acoustical ceilings
- Textured interior walls
- Generous closets and storage space with ventilated vinyl-clad shelving
- Painted wood stair rails
- Colonial-style garage doors
- Aluminum window and sliding glass door frames with screens
- Tinted glass in windows and sliding glass doors
- Smoke detectors
- High efficiency central air conditioning and heating
- 50 gallon, high efficiency water heater

Fabulous Kitchens and Functional Laundries

- Spacious kitchens with morning/breakfast rooms
- Custom-crafted European-style cabinetry
- Choice of decorator colors and 6" backsplashes
- High efficiency white-on-white, Whirlpool appliances
 - Deluxe self-cleaning radiant top range
 - Deluxe dishwasher
 - Garbage disposal
 - Built-in microwave
 - 21.6 cubic foot side-by-side refrigerator/freezer with ice maker and water dispenser on door

- Extra-large capacity washer and dryer
- Pantries for additional storage
- Double compartment, stainless steel sinks with single-lever chrome Moen faucets
- 13" x 13" ceramic tile flooring in choice of decorator colors

Exceptional Baths and Master Suites

- 6" x 6" ceramic tile flooring
- 6" x 6" ceramic tile showers with tile accents in master suites
- Large custom-crafted mica vanities with full-width mirrors
- Cultured marble vanity tops with rounded front edges in master baths
- Elongated toilets in all baths
- Mirrored medicine cabinets in all baths
- Glamorous brass and chrome Moen Monticello faucets in master baths and powder rooms
- Moen single-lever faucets in sinks, tubs and showers in secondary baths
- Spacious walk-in master closets with vinyl-clad shelving
- Mirrored walk-in closet doors in master suites
- His and hers sinks in master baths
- Decorative lighting fixtures in all baths
- Dramatic, high flat or tray ceilings in master suites

The Builder reserves the right at anytime to substitute materials and appliances of comparable quality subject to product availability, and to modify design as deemed advisable by the developer, builder, architect or governmental entity. Features may vary depending on home selection and are subject to change without notice.

BAY HOUSE

4 bedrooms, 2 1/2 baths with family room and 2-car garage



Elevation A



Elevation B

WATERSIDE



504 Northwest 163 Avenue, Pembroke Pines, Florida 33028
Telephone: (954) 443-4096 • Fax: (954) 443-4089

Another fine community by Lowell Homes



Lowell Homes

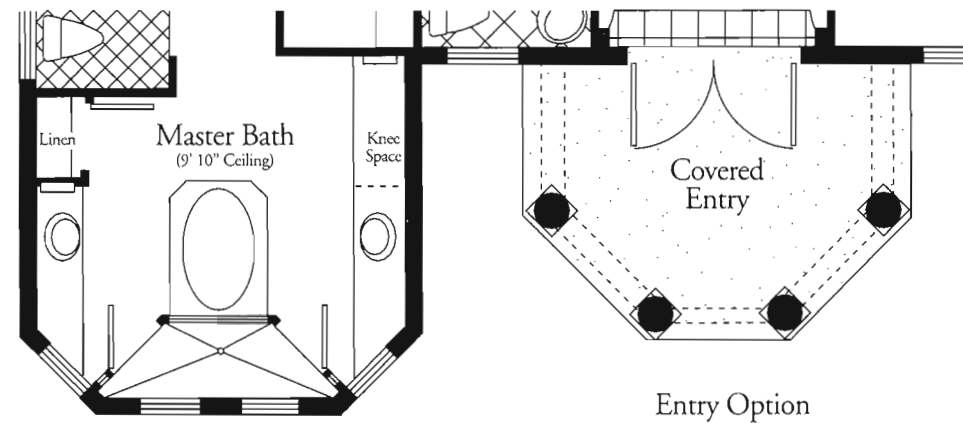


WATERSIDE



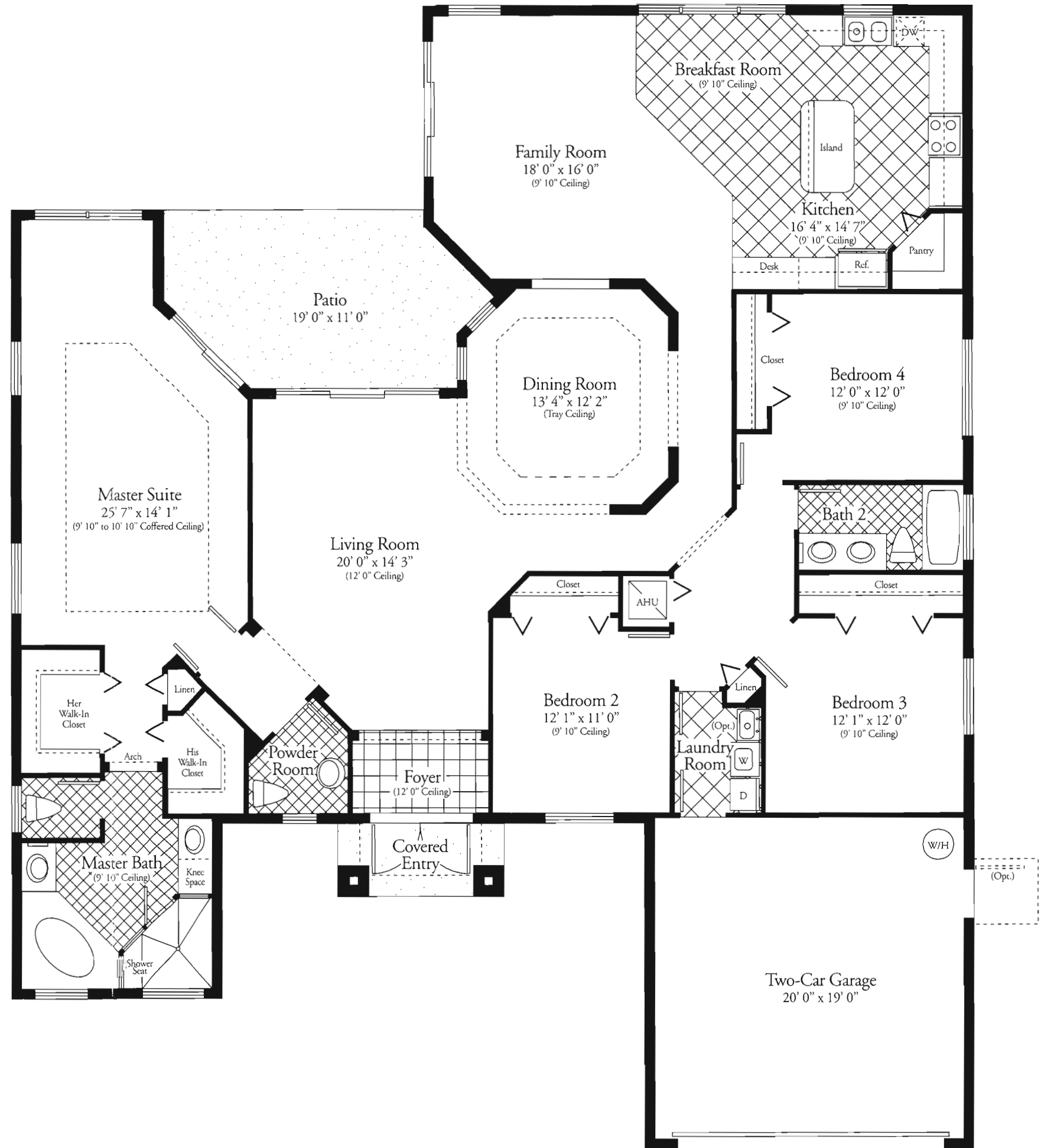
BAY HOUSE

4 bedrooms, 2 1/2 baths with family room
and 2-car garage



Master Bath Bay Window Option

Entry Option



A/C Square Feet2,630

Total Square Feet3,291

Artist's conception. All dimensions are approximate. Developer reserves the right to make modifications on plans.
Note: Tile is indicated with optional diagonal installation. Consult sales representative for information.