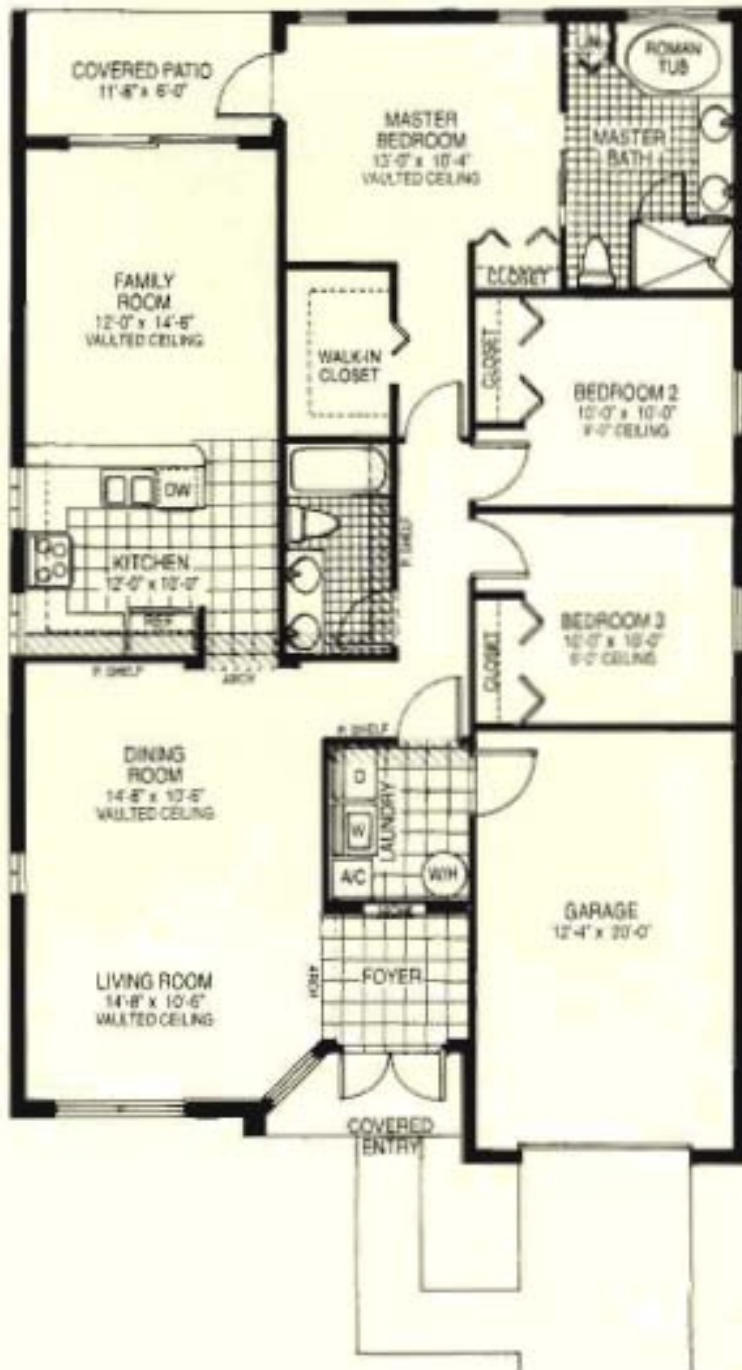


# Barbados

3 Bedroom/2 Bath/Family Room/1 Car Garage

A/C Living Space 1,505 Sq. Ft. • Entry 34 Sq. Ft. • Garage 248 Sq. Ft. • Patio 74 Sq. Ft. • Total 1,861 Sq. Ft.



Elevation "A"



Elevation "B"