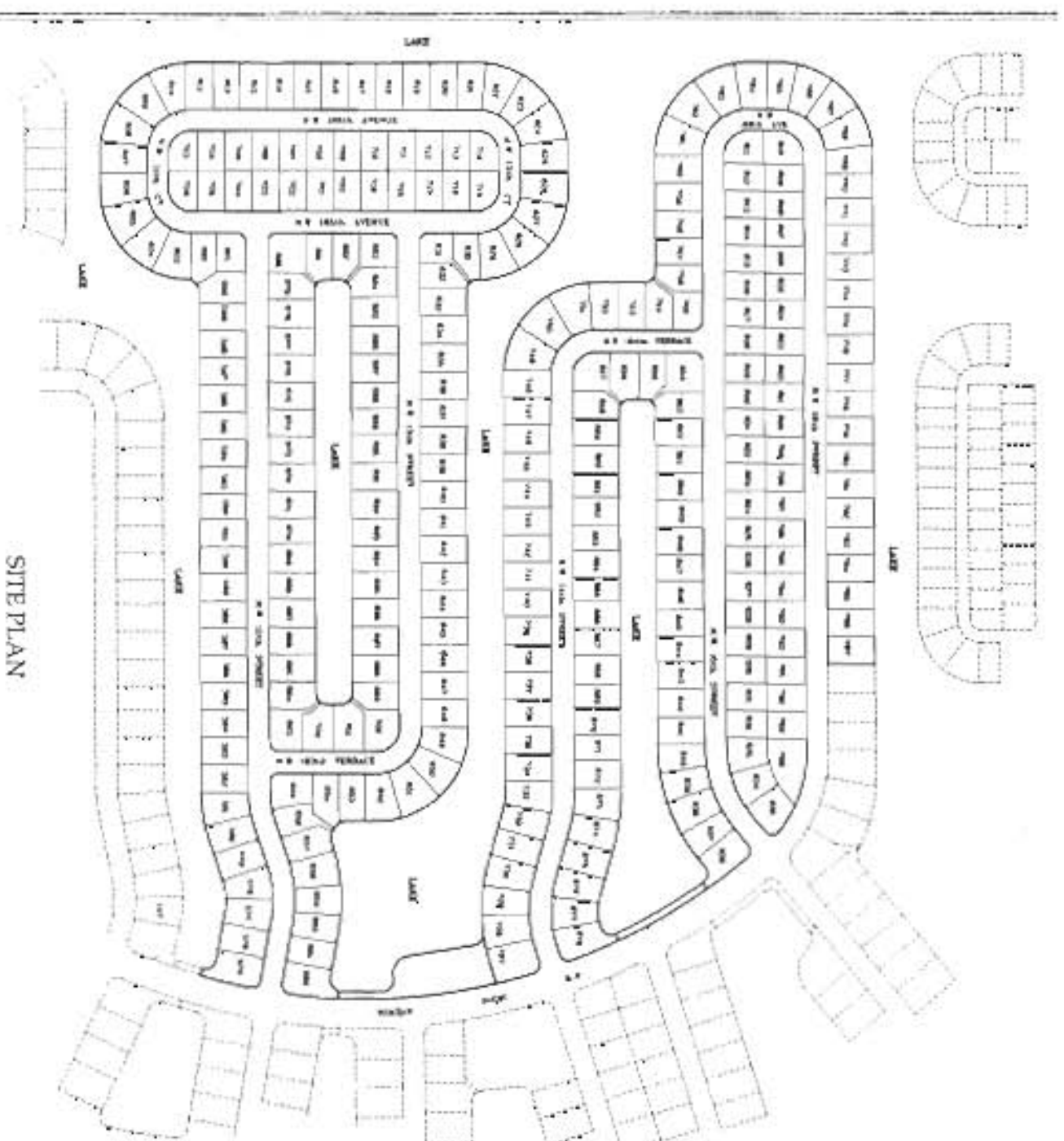
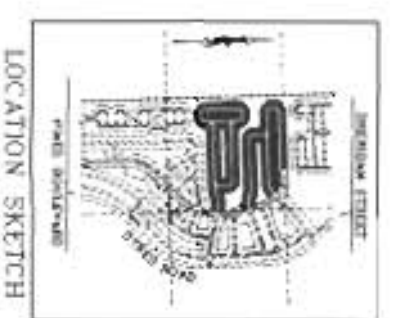


Azalea



SITE PLAN



LOCATION SKETCH

16314 N.W. 12th Street • Pembroke Pines, Florida 33028 • Telephone: 954-435-1500 • Facsimile: 954-435-5006



The Builder reserves the right, as deemed necessary by availability, architect or law to modify floorplans, exterior, specifications, features, and product types without prior notice or obligation. All plans and elevation renderings are artist's conceptions and are not necessarily to scale. All square footages are approximate. Landscaping may vary as to maturity and number. Please consult your sales representative and refer to the Purchase Agreement to determine which features and specifications are included in your home.

Azalea

